

All Farmer Newsletter

Agriculture & Natural Resources Extension Newsletter

In This Issue:

Fall Armyworms

Farming 101

In the Field Videos

Exhibit Hall

BQCA Chuteside Training

Master Cattlemen

Dates to Remember

Corn, Soybean, & Tobacco Field Day

Cicada Emergence

Harvest Dinner

Cook Wild Kentucky Recipe

Ag Report

Remember to tune your
radio to 92.3 FM WFKN
at 8:05 am every Tuesday &
Thursday morning for the Extension
Agriculture report.



Be On The Lookout for Fall Armyworms

We had a truly historic outbreak of fall armyworms in 2021. The last few years, we have not seen these levels, however, damage seems to be more common year in and year out than in the past. Last year, reports of major damage in Simpson County seemed to be most common on home lawns. Fall armyworms are a migratory species that arrive in Kentucky in June, so we need to start keeping our eyes peeled for signs of the fall armyworm.

Fall armyworms typically cause issues in corn, alfalfa, hayfields and home lawns. Often times, home lawns turn brown seemingly overnight.

The caterpillar stage is considered the damaging stage of development for this pest. If you find a caterpillar and suspect it may be a fall armyworm, look for a prominent white inverted "Y" on the head and four dots in a square on the rear. Colors can vary from light tan to nearly black.

You have several ways to manage fall armyworm. Pyrethroids are an effective type of pesticide against foliage-feeding pests. Some examples of these pesticides include Bifenthrin (Talstar), Lambda-cyhalothrin (Scimitar), Permethrin (Astro) and Cyfluthrin (Tempo).

It is best to use the spray formulation and make sure you don't mow or irrigate the sprayed area for 24 hours.

Non-pyrethroid products can also be effective against turf caterpillars. These are low hazards to humans and the environment. Some common examples of these are Acelepryn, Provaunt and Conserve SC.

Contact the Simpson County Extension Service for help with identification and additional control information.

Jason R. Phillips

County Extension Agent for Agriculture & Natural Resources Education

Cooperative
Extension Service

Agriculture and Natural Resources
Family and Consumer Sciences
4-H Youth Development
Community and Economic Development

MARTIN-GATTON COLLEGE OF AGRICULTURE, FOOD AND ENVIRONMENT

Educational programs of Kentucky Cooperative Extension serve all people regardless of economic or social status and will not discriminate on the basis of race, color, ethnic origin, national origin, creed, religion, political belief, sex, sexual orientation, gender identity, gender expression, pregnancy, marital status, genetic information, age, veteran status, physical or mental disability or reprisal or retaliation for prior civil rights activity. Reasonable accommodation of disability may be available with prior notice. Program information may be made available in languages other than English. University of Kentucky, Kentucky State University, U.S. Department of Agriculture, and Kentucky Counties, Cooperating.

Lexington, KY 40506



Disabilities
accommodated
with prior notification.



FARMING 101: FARMING BASICS FOR SUCCESS

Join the Farming 101 class from the comfort of your home! This virtual course is perfect for beginners and will cover essential farming practices to help you grow confidently and succeed! Whether starting a backyard garden or planning a small farm, you'll acquire practical knowledge to get you started. All you need is an internet connection!

What will I learn?

- Module 1- Agriculture Resources in Your Community & Farm Business Management
- Module 2- Things to Consider When Getting Started
- Module 3- Enterprises to Consider on Your Farm
- Module 4- Basic Equipment Needs For Your Farm
- Plus, Special Bonus Content!

Who should join?

- Beginning Farmers
- Urban Gardeners
- Hobby Farmers

Sign up today using this QR code!
Deadline to Register is August 2025.



**For more information, contact the
Simpson County Extension Office at (270) 586-4484.**

Cooperative
Extension Service

MARTIN-GATTON COLLEGE OF AGRICULTURE, FOOD AND ENVIRONMENT

Educational programs of Kentucky Cooperative Extension serve all people regardless of economic or social status and will not discriminate on the basis of race, color, ethnic origin, creed, religion, political belief, sex, sexual orientation, gender identity, gender expression, pregnancy, marital status, genetic information, age, veteran status, physical or mental disability or receipt of institutional care prior to civil rights activity. Reasonable accommodation of disability may be available with prior notice. Program information may be made available in languages other than English. University of Kentucky, Kentucky State University, U.S. Department of Agriculture, and Kentucky Cooperative Extension, Lexington, KY 40506



Martin-Gatton
College of Agriculture,
Food and Environment
University of Kentucky.

ONLINE



Dates & Time:
September 2025

**Register using the QR
Code listed here**

Registration Deadline:
August 2025

Program Fee: \$35.00

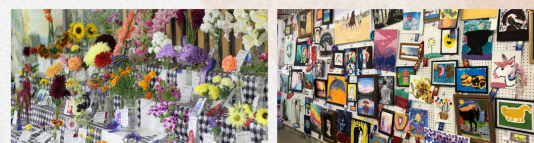
Jason Phillips
Simpson Co. Extension Agent
for Horticulture

Check out the Latest Episodes of In the Field Video Series

**Wicking Containers: A Self-Wicking
Watering System
&
Weeds that are Potentially Toxic to
Livestock**

Plus more at:

<https://simpson.ca.uky.edu/anr>



County Fair Exhibit Hall

ENTRIES: JULY 28 10:00AM-12:30PM
VIEWING: JULY 29 10:00AM- 4:30PM

**Any Simpson County resident can participate in the
Open Division of the County Exhibit Hall.**

Do you like to bake? Do you take photos?
Have a craft you've made in the last year?
Canned vegetables or grown your own in
a garden? Have a beautiful flower in your
garden? All of these and so much more
can be entered into the County Fair
Exhibit Hall.

LOCATION

First United Methodist Church
107 N College St
Franklin, KY 42134

**FOR MORE INFORMATION
CALL THE SIMPSON COUNTY
EXTENSION OFFICE**

270-586-4484



BQCA Chuteside Training

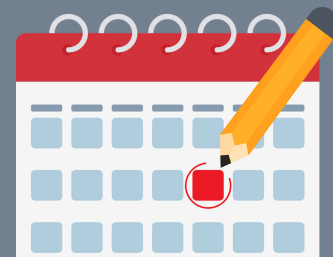
Tuesday, August 28th at 6:00 pm

**Location: Ag Building
Jim Roberts Community Park**

Live, hands-on chute side training

Call 270-586-4484 by Monday, August 25th to RSVP

Martin-Gatton
College of Agriculture,
Food and Environment
University of Kentucky



2025 MAMMOTH CAVE MASTER CATTLEMEN

**ALLEN
BUTLER
EDMONSON
LOGAN
SIMPSON
WARREN**

10/13 Nutrition
Katie VanValin

10/20 Herd Health
Michelle Arnold

10/27 Reproduction & Record Keeping
Les Anderson

11/3 Genetics
Darrh Bullock

11/10 Marketing & Profitability
Kevin Laurent

Facilities & Winter Feeding
Katie VanValin

11/17

ATTENTION

- *Monday Night Session*
Location TBD
- **\$100 per person**
- *Meal Provided at Each Session*
- *Checks Payable to Warren Co. Soil Test*



REGISTER NOW
(270)586-4484

Cooperative Extension Service

Agriculture and Natural Resources
Family and Consumer Sciences
4-H Youth Development

MARTIN-GATTON COLLEGE OF AGRICULTURE, FOOD AND ENVIRONMENT

Educational programs of Kentucky Cooperative Extension serve all people regardless of economic or social status and will not discriminate on the basis of race, color, ethnic origin, national origin, creed, religion, political belief, sex, sexual orientation, gender identity, gender expression, pregnancy, marital status, genetic information, age, veteran status, physical or mental disability or receipt of retaliation for prior civil rights activity. Reasonable accommodation of disability may be available with prior notice. Program information may be made available in languages other than English.
University of Kentucky, Kentucky State University, UK Department of Agriculture, and Kentucky Counties, Cooperating.



- June 19- Closed for Juneteenth
- June 24- SCE District Board Meeting
-SCEO Upstairs Meeting Room, 12 pm
- July 4- Closed for Independence Day
- July 22- Corn, Soybean, & Tobacco Field Day, Princeton
- July 28 & 29- County Fair Exhibit Hall
- Franklin First United Methodist CLC
- August 1- Hometown Harvest Dinner
-Barn at Bethel Grove, 6 pm
- August 28- Simpson County Cattlemens
BQCA Chuteside Training
- Jim Roberts Community Park, Ag Building 6 pm
- September 1- Closed for Labor Day
- September- Farming 101 Courses
- September 9- Rinse & Return
- 10 am- 11:30 am, Behind FS Farmer's Market
- October- Master Cattlemen Courses
- October 14- SCE District Board Meeting
-SCEO Upstairs Meeting Room, 12 pm
- October 18- Boofest
- Franklin Town Square

UK RESEARCH AND EDUCATION CENTER

CORN, SOYBEAN AND TOBACCO FIELD DAY

July 22, 2025 UKREC, Princeton
8:00 am- noon, CT with lunch to follow





Kentucky's 2025 Periodical Cicada Emergence

2024 was famous for the Double Brood Emergence, but Kentucky will see more cicada action in 2025. Nearly every county east of Ohio County in western Kentucky will see some periodical cicada activity. These amazing insects have been below-ground for 17 years, what can we expect when they start to emerge?

Things will start around mid-May...

Periodical cicada nymphs start moving out of the ground when soil temperatures reach about 64 degrees. This matches up with the spring bloom of irises. Then, Brood XIV will arrive!



May
Nymphs emerge from the ground



June
Adults sing, mate, and lay eggs



July
Periodical cicadas die out for the year, and will be gone for the next 17 years



Periodical cicada fast facts



There are three different species that will emerge in 2025

The cicadas that emerge next year were born in the year 2008

Cicadas "count" the seasons below ground to know when to emerge



Brood XIV is mostly concentrated in Kentucky, call them the "bourbon brood"!

Snakes, turkeys, foxes, and lots of wildlife devour them

Common questions and concerns about periodical cicadas



When millions or billions of bugs come out of the ground, people have questions! Luckily, there is very little to worry about with these insects but let's cover some specific FAQs.

17

Why seventeen years?
The long period between emergences means nothing only eats these cicadas.



Safe for pets?
Dogs and cats can safely consume cicadas in moderation.



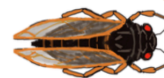
Why so loud?
Male cicadas sing together to attract females, the noise is a bug concert.



Managing dead cicadas?
Usually they can be mulched or mowed into landscape.



Safe for people to eat?
If you don't have a shellfish allergy, eat them after cooking and in moderation



Where to find?
Most commonly found near oaks by streams, creeks, and rivers. Also by fruit trees.



Cicadas and new trees

Periodical cicadas lay their eggs in tree branches by cutting slits in the bark. Big, mature trees can handle this. New trees or fruit trees should be protected though. The best option is to purchase "cicada netting" which is gauged to exclude females from trees. Secure excess netting to the tree around the trunk where there are no branches. It will look a bit like a lollipop when finished.



Save the Date

**Franklin-Simpson
Farmer's Market
Hometown Harvest
Dinner
Friday, August 1
Barn at Bethel Grove
6 p.m.**

Oven-Fried Fish Fillets

- 1 pound fish fillets
- 2 tablespoons lemon juice
- 2 tablespoons vegetable oil
- 1/4 cup shredded parmesan cheese
- 1/4 teaspoon dill weed
- 1/4 teaspoon salt
- 1/4 teaspoon pepper
- 2 cups cornflake-type cereal, crushed



Preheat oven to 350 degrees Fahrenheit. Grease a 13x9 baking dish. Cut fillets into serving pieces, if necessary. In a small bowl, combine lemon juice and vegetable oil. In a separate small bowl, mix Parmesan cheese, dill weed, salt, and pepper. Dip each fillet into lemon juice mixture. Lay in baking dish, sprinkle with cheese mixture, and coat with crushed cereal. Bake uncovered for 20 to 30 minutes or until fish flakes easily.

Yield: 4 servings

Adapted from "Fish and Game Cookbook" by Bonnie Scott, Copyright 2013, Bonnie Scott

Nutrition Facts

4 servings per container
Serving size 4 ounces (110g)

Amount per serving
Calories 200

	% Daily Value*
Total Fat 8g	8%
Saturated Fat 1g	5%
Trans Fat 0g	
Cholesterol 80mg	27%
Sodium 330mg	14%
Total Carbohydrate 12g	4%
Dietary Fiber 0g	0%
Total Sugars 1g	
Includes 0g Added Sugars	0%
Protein 24g	
Vitamin D 1mcg	6%
Calcium 97mg	8%
Iron 6mg	35%
Potassium 449mg	10%

* The % Daily Value (DV) tells you how much a nutrient in a serving of food contributes to a daily diet. 2,000 calories a day is used for general nutrition advice.



This institution is an equal opportunity provider. This material was funded by USDA's Supplemental Nutrition Assistance Program — SNAP.



USDA
Supplemental
Nutrition
Assistance
Program



University of Kentucky
College of Agriculture,
Food and Environment
Cooperative Extension Service

